

VerifEye™ Mini Meter™ Multiple Meter Units (MMU)



Extra-Large Enclosure



Large Enclosure



Medium Enclosure

Description

VerifEye™ Mini Meter™ Configured Multiple Meter Units (MMUs) are designed for multi-tenant submetering applications in which multiple single phase (120/240V 1PH 3W and 120/208V 2PH 3W) loads are fed from the same power distribution panel to be metered.

MMUs have important advantages over multiple individually housed meters including:

- Smaller mounting footprint
- Reduced hardware requirements (conduit, wire, short circuit protection devices, etc.)
- Reduced installation time
- Individual meters in one enclosure architecture enhances product reliability

Each VerifEye Mini Meter installed in an MMU is a revenue-grade*, ANSI C12.20-compliant energy meter that is backed by Leviton's best in the industry 5-year warranty. Mini Meter MMUs are NEMA 4X rated and UL Listed, suitable for either indoor or outdoor installations. Each Mini Meter has built-in pulse outputs for connection to a High Density Pulse Module, Wireless AMR Transceiver, or a Data Acquisition Server with pulse inputs.

*Leviton Solid Core Current Transformers are recommended for revenue-grade metering

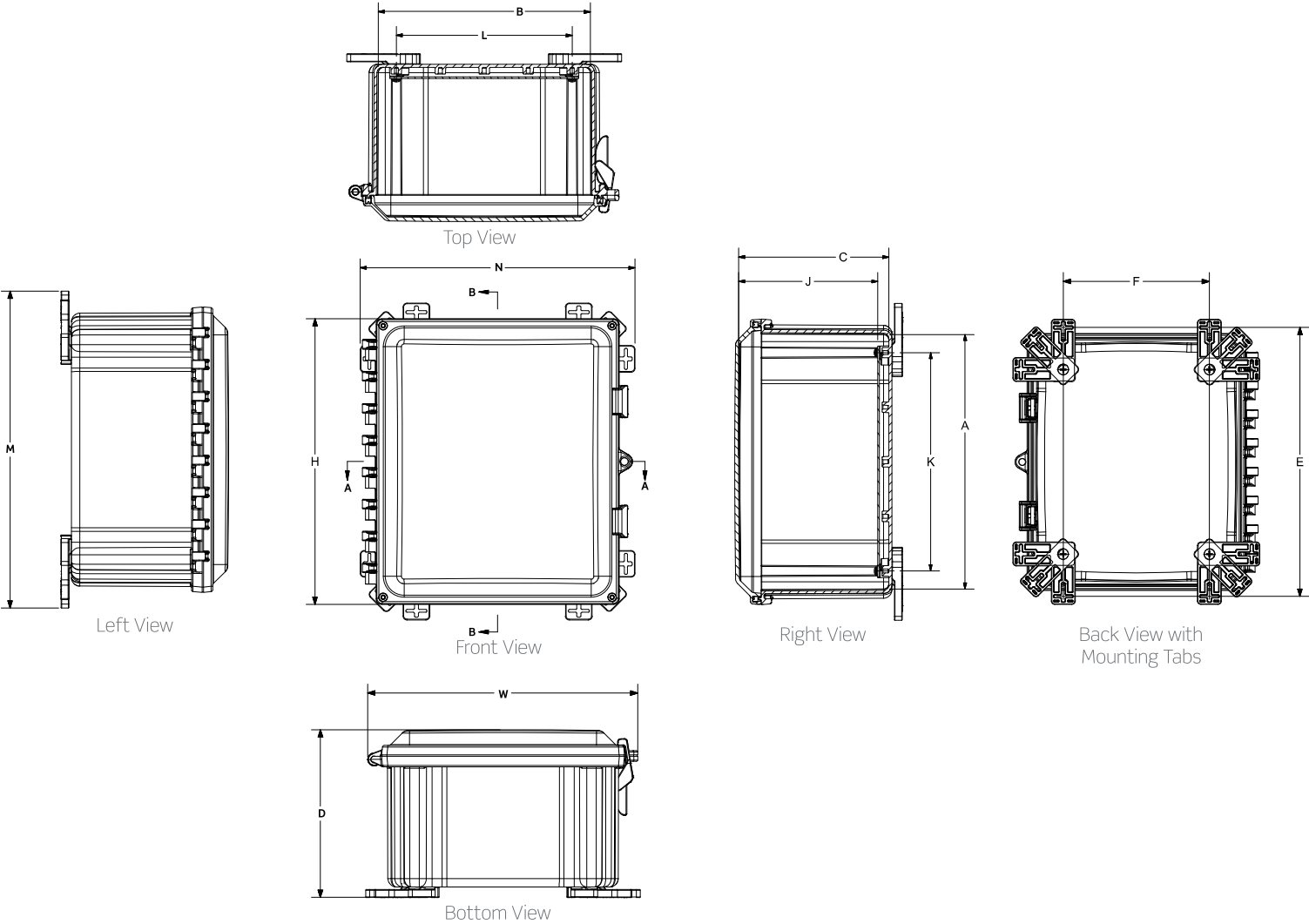
Features

- Suitable for both new construction and retrofit applications, Mini Meter (kWh) MMUs are available in 3 sizes:
 - Medium: Houses 2 to 4 Mini Meters
 - Large: Houses 5 to 8 Mini Meters
 - Extra-Large: Houses 9 to 20 Mini Meters

Basic panels are pre-configured with the following options:

- Terminals only for meter pulse outputs
- Integrated A8911 High Density Pulse Module (HDPM)
- Integrated R9120 Modhopper wireless transceiver (MH)
- Integrated A8810/A7810 Data Acquisition Server (DAS)

Dimensions Diagrams

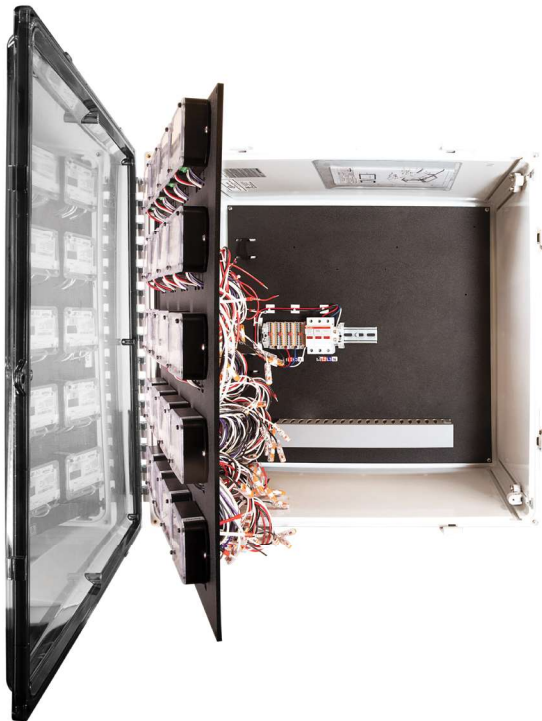


Meter Size	Overall H X W X D	Inside A X B X C	Mounting Horizontal E X F	Mounting Vertical E X F	Mounting 45 E X F	J	K	L	M	N
Medium	15.40 x 14.68" x 7.86 (391 x 373 x 200)	13.95 x 11.95 x 7.07 (354 x 304 x 180)	11.64 x 14.04 (296 x 357)	16.04 x 9.64 (407 x 245)	14.76 x 12.75 (375 x 324)	6.56 (167)	12.25 (311)	10.25 (260)	16.89 (429)	14.89 (378)
Large	21.41 x 18.68 x 9.97 (544 x 474 x 253)	19.86 x 15.86 x 9.15 (504 x 403 x 232)	18.75 x 19.17 (476 x 487)	23.15 x 14.75 (588 x 375)	21.91 x 17.87 (557 x 454)	8.65 (220)	18.25 (464)	14.25 (362)	24.00 (610)	20.02 (509)
Extra Large	25.41 x 26.68 x 11.41 (645 x 678 x 290)	23.91 x 23.91 x 11.88 (607 x 607 x 302)	N/A	25.69 x 18.00 (653 x 457)	N/A	10.56 (268)	22.25 (565)	22.25 (565)	26.69 (678)	21.86 (555)

All measures are in inches, items in parentheses are in millimeters.

Ordering Information

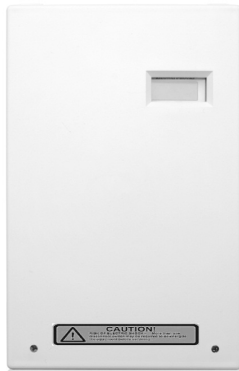
Mini Meter MMU Basic Meters—With Terminals Only	
Cat. No.	Description
MMT02-2T0	Mini Meter MMU - Medium Enclosure, 2 Meters with Terminals Only
MMT03-2T0	Mini Meter MMU - Medium Enclosure, 3 Meters with Terminals Only
MMT04-2T0	Mini Meter MMU - Medium Enclosure, 4 Meters with Terminals Only
MLT05-2T0	Mini Meter MMU - Large Enclosure, 5 Meters with Terminals Only
MLT06-2T0	Mini Meter MMU - Large Enclosure, 6 Meters with Terminals Only
MLT07-2T0	Mini Meter MMU - Large Enclosure, 7 Meters with Terminals Only
MLT08-2T0	Mini Meter MMU - Large Enclosure, 8 Meters with Terminals Only
MXT09-2T0	Mini Meter MMU - XL Enclosure, 9 Meters with Terminals Only
MXT10-2T0	Mini Meter MMU - XL Enclosure, 10 Meters with Terminals Only
MXT11-2T0	Mini Meter MMU - XL Enclosure, 11 Meters with Terminals Only
MXT12-2T0	Mini Meter MMU - XL Enclosure, 12 Meters with Terminals Only
MXT13-2T0	Mini Meter MMU - XL Enclosure, 13 Meters with Terminals Only
MXT14-2T0	Mini Meter MMU - XL Enclosure, 14 Meters with Terminals Only
MXT15-2T0	Mini Meter MMU - XL Enclosure, 15 Meters with Terminals Only
MXT16-2T0	Mini Meter MMU - XL Enclosure, 16 Meters with Terminals Only
MXT17-2T0	Mini Meter MMU - XL Enclosure, 17 Meters with Terminals Only
MXT18-2T0	Mini Meter MMU - XL Enclosure, 18 Meters with Terminals Only
MXT19-2T0	Mini Meter MMU - XL Enclosure, 19 Meters with Terminals Only
MXT20-2T0	Mini Meter MMU - XL Enclosure, 20 Meters with Terminals Only



MXT20-2T0

VerifEye™ Mini Meter™ Kits

Submetering Solutions for Accurate Measurement & Verification



Mini Meter Indoor Flush Mount Enclosure



Mini Meter Indoor Surface Mount Enclosure



Mini Meter Outdoor Enclosure



Mini Meter Module



Current Transformers (CTs)

DEFINITION

Leviton VerifEye™ Mini Meter™ line of revenue-grade meters meet the requirements for all single phase tenant billing applications. Designed to provide a simple and effective process for accurately capturing measurements of power consumption, Mini Meters are easy to specify and install for new construction and retrofits.

- 0.5% kWh Meter, ANSI C12.20 (0.5), NRTL Certified
- 120/208/240V 2PH 3W
- 100-200 Amps
- Kit includes submeter, Current Transformers (CTs) and the specified enclosure (if included)
- Multi-tenant residential applications
- Compact footprint; fits almost anywhere
- Cost effective solution
- Isolated pulse output channel for AMR compatibility

VerifEye meters utilize highly accurate current transformers for revenue-grade performance certified to ANSI standards.

Leviton offers CTs in solid and split core styles to accommodate all phases of installation and construction. Solid core CTs are ideal for new construction, when power is not live and wires can easily be threaded through the core. Split core CTs can be installed at any time without having to disconnect wire terminations, making them the optimal choice for retrofitting an existing structure. Split core CTs close securely for fast, precise installation with no need for time-consuming tie wraps and no worries about improper seating or core half separation. Both solid and split core CTs offer high quality, long term accuracy and reliability.

Every Mini Meter has an installer-friendly feedback feature. The user friendly reverse phase indicators, found on the meter's LCD, illuminate if a meter is installed improperly. After installation, the green duty cycle light shows that the meter is collecting electric consumption data at the appropriate rate.

PRODUCT DATA

APPLICATIONS

Use Mini Meters in multi-tenant residential and certain commercial industrial applications such as campgrounds and marinas for:

- Load profiling and benchmarking
- AMR/BAS/BMS/EMS integration
- Usage aggregation
- Tenant cost allocation
- Measurement and verification
- Energy conservation and cost reduction
- Green building initiatives and government mandates

FEATURES

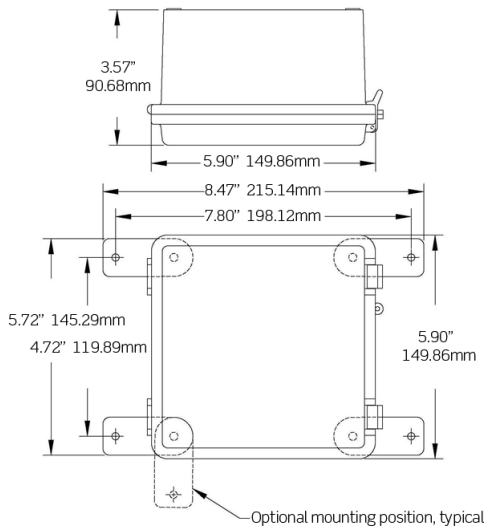
- Measures kWh
- Revenue-grade—0.5% kWh meter conforms to all applicable standards of ANSI C12.2
- Equipped standard with an Isolated Pulse Output channel for integration with automated meter reading
- Available in indoor flush mount and surface mount enclosures and outdoor NEMA 4X enclosures
- Utilizes revenue-grade Solid core Current Transformers (CTs) or 1.0% accuracy split core CTs
- “6” models UL/cUL Listed Energy Usage Monitor per CCN FTRZ
- Five year warranty

AMPERAGES	PHASE/VOLTAGES
100 and 200A	1Ø/3W - 120/208/240V

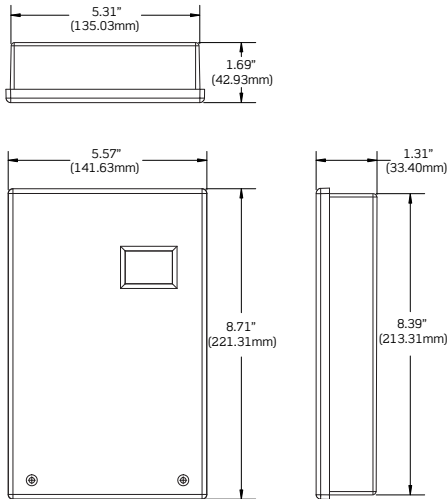
* Contact factory for non-US voltage configurations.

DIMENSIONS

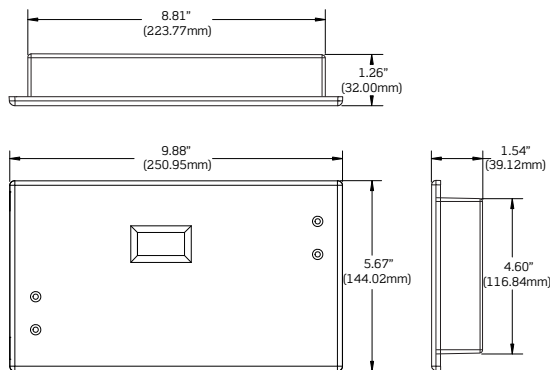
OUTDOOR ENCLOSURE — M0240



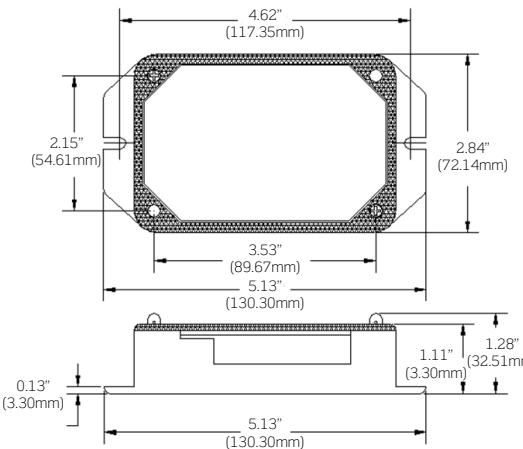
INDOOR SURFACE MOUNT ENCLOSURE — 6PSMT



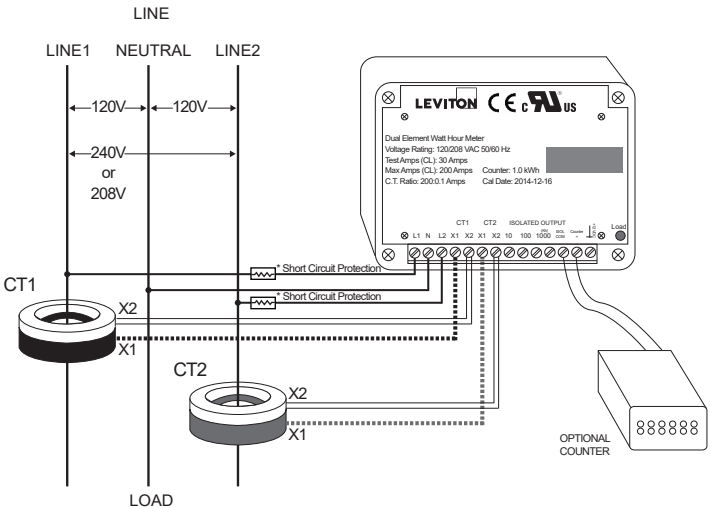
INDOOR FLUSH MOUNT ENCLOSURE — MK240, 6P201



OEM METER — MSxCT, MDxCT



DUAL ELEMENT, MINI METER WIRING DIAGRAM



ORDERING INFORMATION

MINI METER KITS - INDOOR FLUSH MOUNT ENCLOSURE

NOTE: All kits include meter, specified enclosure and Current Transformers (CTs)

VOLTAGE	AMPS	CTs INCLUDED	CAT. NO.
120/240 1PH/3W Split Phase, 120/208 2PH/3W	100A	2 Solid CTs	MK240-1SW
	200A		MK240-2SW
120/208/240V 1PH 3W			6P201-C02

MINI METER KITS - INDOOR SURFACE MOUNT ENCLOSURE

VOLTAGE	AMPS	CTs INCLUDED	CAT. NO.
120/240 1PH/3W Split Phase, 120/208 2PH/3W	200A	2 Solid CTS	6PSMT-C02

MINI METER KITS - OUTDOOR ENCLOSURE

VOLTAGE	AMPS	CTs INCLUDED	CAT. NO.
120/240 1PH/3W Split Phase, 120/208 2PH/3W	100A	2 Solid CTs	MO240-1SW
	200A		MO240-2SW
120/240 1PH/3W Split Phase, 120/208 2PH/3W	100A	2 Split CTs	MO240-01W
	200A		MO240-02W

MINI METER KITS- LCD MODULE

NOTE: All kits include meter and Current Transformers (CTs)

VOLTAGE	AMPS	CTs INCLUDED	CAT. NO.
DUAL ELEMENT MINI METER			
120/240 1PH/3W Split Phase, 120/208 2PH/3W 0.1kWh	100A	2 Solid CTs	MDNCT-1SC
	100A	2 Split CTs	MDNCT-1SP
	200A	2 Solid CTs	MDNCT-2SC
	200A	2 Split CTs	MDNCT-2SP
120/240 1PH/3W Split Phase, 120/208 2PH/3W 1kWh	100A	2 Solid CTs	MDTCT-1SC
	100A	2 Split CTs	MDTCT-1SP
	200A	2 Solid CTs	MDTCT-2SC
	200A	2 Split CTs	MDTCT-2SP

Leviton Manufacturing Co., Inc. Lighting & Controls

20497 SW Teton Avenue, Tualatin, OR 97062 tech line 800-959-6004 tel 800-736-6682

©2021 Leviton Manufacturing Co., Inc. All rights reserved. Subject to change without notice.